

# BREAKAWAY CONNECTOR

(Patent Pending)



**Breakaway Connectors, also known as 'weak links', are used to prevent stretching or breaking of pipes and cables which can result from excessive pulling loads being applied to them.**

The Pipe Equipment Breakaway Connector, manufactured from high grade stainless steel, is designed to separate into two parts when a specific load is exceeded, thereby avoiding damaging pulling loads being applied to a pipe or cable.

Two models are currently available:

Model '1' – For loads between 0.3 and 6.0 tonnes

Model '2' – For loads between 6.0 and 20.0 tonnes

The two parts of the Breakaway Connector are joined together using up to 5 screws known as Connector Pins. For each model there are five different load rated Connector Pins.

By fitting the correct combination and number of Connector Pins it is possible to select virtually any load from 0.3 to 6.0 tonnes, in 0.1 tonne increments, for Model '1', and any load from 6.0 to 20.0 tonnes in 0.5 tonne increments for Model '2'. Therefore a single connector with different sets of Connector Pins can be used for a wide range of specific loads.

All pins are tested to ensure that they will break within 5% of their rated load and are available either as single pins or in sets for a specific load.

Should a Breakaway Connector pull apart, due to its rated load being exceeded, then the broken Connector Pins are simply removed and replaced with new Pins. A much more economical solution than replacing the complete connector.

## MODE OF OPERATION

For directional drilling applications the Breakaway Connector is located between the swivel and the pipe, or cable, pulling device, e.g. towing head or towing sock. When using with other installation techniques it is inserted between the end of the winch wire, or pull rods, and the pulling device.

## MAJOR FEATURES

- Prevents damage to pipes and cables
- Two models to cover a load range from 0.3 to 20.0 tonnes
- Variable load settings
- Reusable
- Compact
- Manufactured from stainless steel

The company follow a policy of continuous product development and as such reserves the right to make alterations to equipment and techniques without prior notice.

## PIPE EQUIPMENT SPECIALISTS LTD

66 DUKESWAY, TEESIDE INDUSTRIAL ESTATE, THORNABY, STOCKTON-ON-TEES, TS17 9LT, ENGLAND

**TEL: +44 (0) 1642 769789 FAX: +44 (0) 1642 769456**

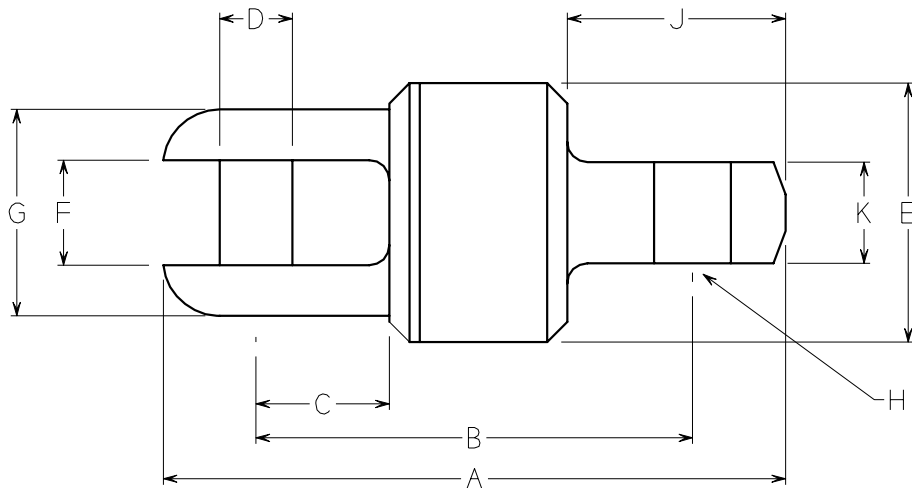
**www.pipe-equipment.co.uk Email: info@pipe-equipment.co.uk**



Certificate Number: 1253

WP/TIS/BC/796F

# BREAKAWAY CONNECTOR



## BREAKAWAY CONNECTOR

### DIMENSIONS (mm)

MODEL	PART No.	A	B	C	D	E	F	G	H	J	K	WEIGHT Kg
1	608001	154	108	33	18	64	26	51	19	54	25	1.7
2	611001	291	213	49	25	95	39	71	57	127	22	6.6

## BREAKAWAY PIN VALUES AND COLOUR CODES

### MODEL 1 (0.3 - 6.0 Tonnes)

<b>BREAK VALUE (Kg)</b>	300	400	500	1000	1200
<b>COLOUR CODE</b>	WHITE	BEIGE	TURQUOISE	PURPLE	BLACK
<b>PART No.</b>	609030	609040	609050	609100	609120

### MODEL 2 (6.0 - 20 Tonnes)

<b>BREAK VALUE (Kg)</b>	2000	2500	3000	3500	4000
<b>COLOUR CODE</b>	WHITE	BEIGE	TURQUOISE	PURPLE	BLACK
<b>PART No.</b>	612200	612250	612300	612350	612400

By using the correct combination of Breakaway Pins it is possible to select virtually any load between 0.3 and 6.0 tonnes in 0.1 tonne increments for the Model 1 Breakaway, and any load between 6.0 and 20.0 tonnes in 0.5 tonne increments for the Model 2 Breakaway.

Every effort is made to ensure that information given in this table is correct but Pipe Equipment Specialists Ltd. cannot be held responsible for mistakes in printing or misinterpretation that could lead to prosecution on incorrectly purchased products.

## PIPE EQUIPMENT SPECIALISTS LTD

66A DUKESWAY, TEESIDE INDUSTRIAL ESTATE, THORNABY, STOCKTON-ON-TEES, TS17 9LT, ENGLAND

**TEL: +44 (0) 1642 769789 FAX: +44 (0) 1642 769456**

**www.pipe-equipment.co.uk Email: info@pipe-equipment.co.uk**



Certificate Number: 1253

WP/TIS/BC/204R